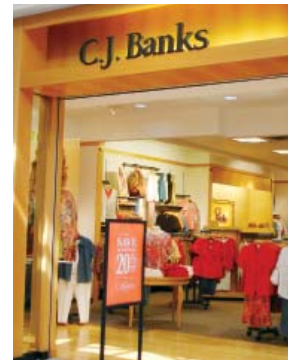


INDIAN MOUND MALL
Newark/Heath, Ohio
www.indianmoundmall.com

INDIAN MOUND

MALL





PROPERTY DESCRIPTION

Indian Mound Mall serves a growing bedroom community just 35 minutes from downtown Columbus. Since the mall's opening, the once rural Route 79 is now lined with thriving retail developments that complement the mall's mix, which includes Dick's Sporting Goods (opening soon), an expanded Elder-Beerman, JCPenney, and Sears. An 11-screen Hollywood Theaters, a 400-seat food court and nearly 70 stores draw shoppers from Licking, Knox, Muskingum, Perry and Fairfield Counties. Major employers in the area include Owens Corning Corporation, Licking Memorial Hospital, Meritor, Boeing Guidance Repair, Denison University, The Ohio State University-Newark, State Farm Insurance, Anomatic, and Longaberger.

KEY RETAIL

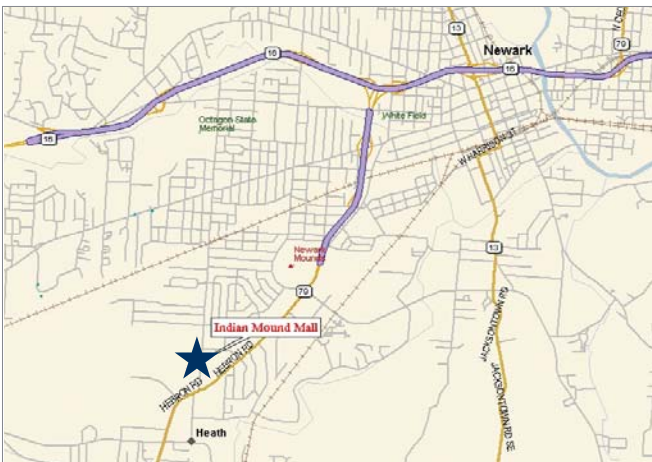
ANCHORS

- Dick's Sporting Goods (opening soon)
- Elder-Beerman
- Hollywood Theaters
- JCPenney
- Sears

PERIPHERAL RETAIL

- ALDI Foods
- GFS Marketplace
- h.h. gregg
- Hobby Lobby
- Lowe's
- McDonald's
- Target
- Toys'R Us
- Walmart Supercenter

CITY VIEW MAP



★ Indian Mound Mall

TRADE MAP



★ Indian Mound Mall Trade Area Radius: 20 Miles

TRADE AREA DEMOGRAPHICS

| RADIUS | 10 MILES | 20 MILES | 30 MILES |
|-----------------------|----------|----------|-----------|
| POPULATION | 111,480 | 296,980 | 1,168,911 |
| HOUSEHOLDS | 43,042 | 109,506 | 447,690 |
| AVG. HOUSEHOLD INCOME | \$71,699 | \$80,765 | \$70,450 |

2015 Projection | Source: Sites USA



AERIAL PHOTOGRAPH

Route 79, which runs from Interstate 70 through Heath and Newark, carries nearly 29,000 vehicles per day past the mall. The area is the main commercial corridor servicing the region.

STATISTICS

MAJOR STORES

American Eagle, Aeropostale, Bath & Body Works, Christopher & Banks, Hibbett Sporting Goods, Victoria's Secret

GROSS LEASABLE AREA

557,216 square feet

NUMBER OF STORES

70

PARKING

3,201 spaces

TRADE/MARKET AREA

Licking County is geographically the second largest county in Ohio and one of the largest in terms of population and labor pool in the Columbus metro area. More than 50 of the Fortune 500 companies have a presence here, and business and residential growth has increased exponentially primarily in the western portion of the county. Other significant growth areas include Heron Bay, a recently developed upscale community of million-dollar homes near Buckeye Lake, approximately 20 minutes south of the shopping center.

GLIMCHER

Morgan Polovick
180 East Broad Street
Columbus Ohio 43215
614.621.9000
www.glimcher.com

GRT
LISTED
NYSE